

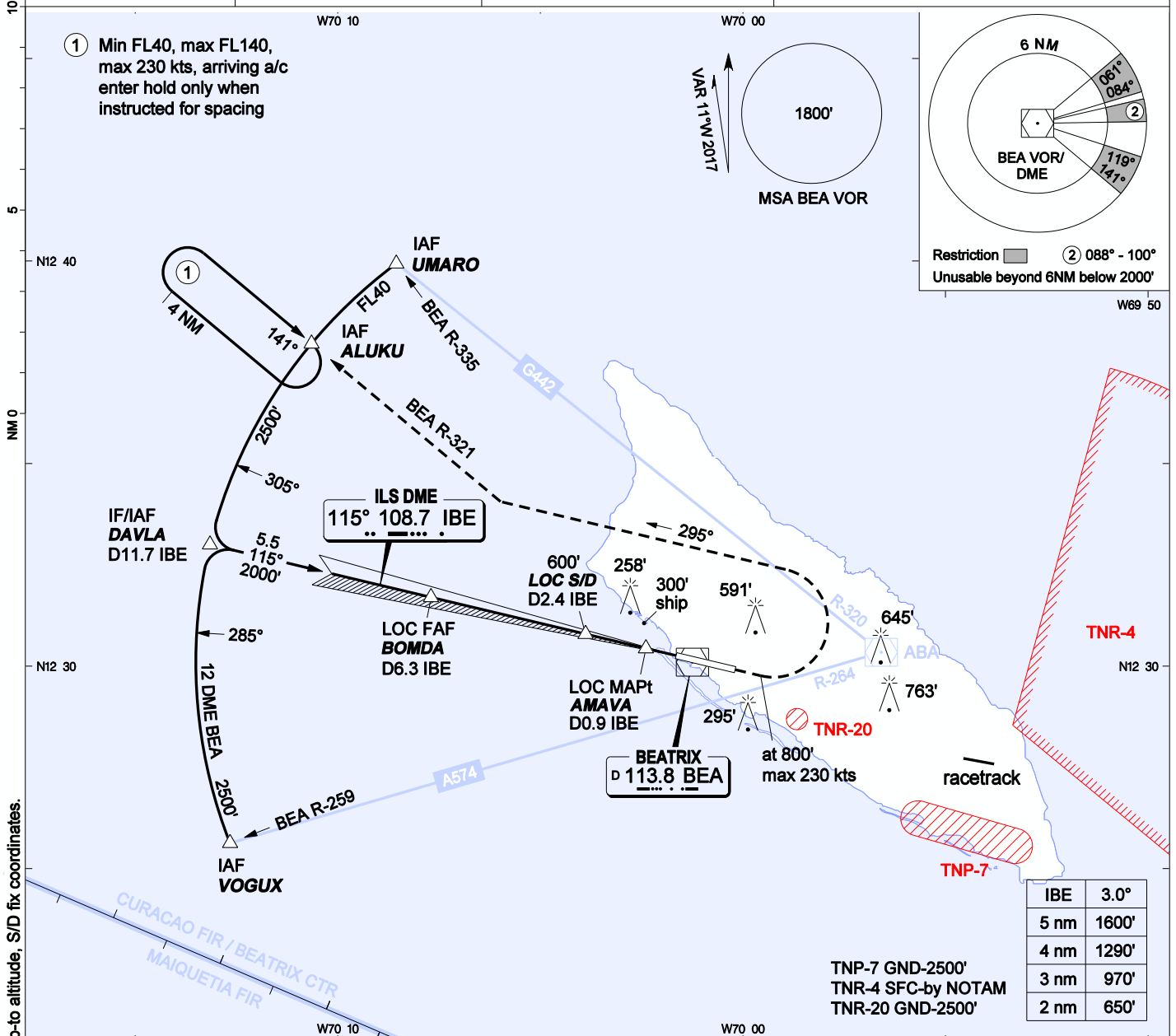
AIP DUTCH CARIBBEAN

INSTRUMENT APPROACH CHART- ICAO

AD ELEVATION: 62'
TRANS LEVEL: FL 40
TRANS ALT: 2500' (2438')

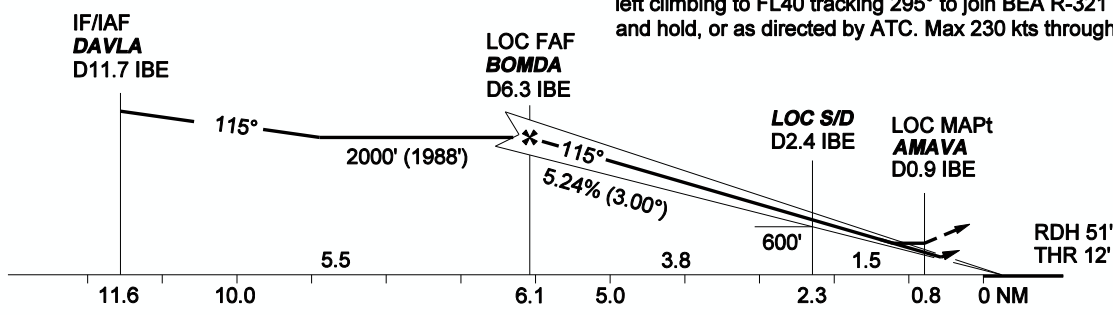
BEATRIX:
APP/TWR 120.9 GND 118.0
APRON 121.6 ATIS 132.1

**ILS Y RWY 11
REINA BEATRIX INT'L (TNCA)
ARUBA**



CHANGES: Min altitude UMARO-ALUKU, min holding ALUKU, missed appr climb-to altitude, S/D fix coordinates.

MISSED APPR: Climb on extended centerline to 800', then turn left climbing to FL40 tracking 295° to join BEA R-321 to ALUKU and hold, or as directed by ATC. Max 230 kts through first turn.



OCA(H)	A	B	C	D	GROUNDSPEED - DESCENT RATE						
					KNOTS	70	90	100	120	140	160
ILS CAT I	233' (221')	245' (233')	253' (241')	263' (251')	FT/MIN	372	478	531	637	743	849
LOC (GS out)	440' (428')	440' (428')	440' (428')	440' (428')	THR11	N12 30	15.50	W070 01	38.98		
CIRCLING	890' (828')	890' (828')	1160' (1098')	1160' (1098')	GS/DME	N12 30	09.50	W070 01	30.25		

- Bearings are magnetic, altitudes, elevations and heights in feet and distance in NM. Straight-in heights are relative to THR elevation, other heights are relative to AD elevation.
- BEA DME may be used if IBE DME inoperative: add 0.3 nm.

ALUKU	N12 37	54.84	W070 10	35.21
AMAVA	N12 30	26.16	W070 02	23.69
BOMDA	N12 31	41.97	W070 07	41.98
DAVLA	N12 32	59.81	W070 13	09.24
UMARO	N12 39	51.07	W070 08	27.25
VOGUX	N12 25	38.26	W070 12	38.46
S/D D2.4 IBE	N12 30	47.47	W070 03	53.10